

**DESCRIPTION**

A solenoid-operated, 2-way, direct-acting, spool-type, normally closed, screw-in, hydraulic cartridge valve designed to operate as a bidirectional blocking valve in low flow circuits.

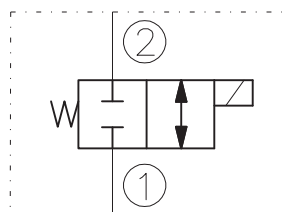
**OPERATION**

When de-energized, the EV06-2L blocks flow in both directions. When energized, the valve's spool shifts to open the bidirectional flow path.

**RATINGS**

- Operating Pressure: 250bar
- Flow: 10 l/min max.
- Internal Leakage: 82 cc/minute max. at 250bar
- Temperature: -20°C to 90°C with standard Buna N seals
- Coil Duty Rating: Continuous from 85% to 115% of nominal voltage
- Minimum Pull-in Voltage: 85% of nominal at 250bar
- Filtration: Recommended 25µm nominal or better
- Fluids: Mineral-based or synthetics with lubricating properties at viscosities of 7,4 to 420 cSt
- Installation: No restrictions
- Cavity: CC06-2 ; See "CAVITIES AND BODIES" brochure

**SYMBOL**



**CAVITY**

See "CAVITIES AND BODIES" brochure

**TO ORDER**

EV06-2L

<p><b>Voltage</b></p> <p>0 - Without coil 12 - 12V DC 24 - 24V DC 11 - 110V RAC 22 - 220V RAC</p>	<p><b>Seals</b></p> <p>N - Buna N V - Viton A</p>
---	---

Terminations DIN 43650.  
See "Accessories" brochure

**PERFORMANCE (Cartridge Only)**

